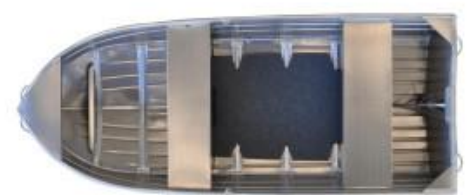




Quintrex 370 Explorer + Yamaha F20hp 4-Stroke - Pack 3 for sale online prices

\$15,390



Description

Discover the exceptional capabilities of the Quintrex 370 Explorer, painted in sleek white. This versatile boat is perfect for your outdoor adventures, featuring a stable design with a one-piece external solid T keel for extra durability and a comfortable ride. The 370 Explorer offers ample space while remaining compact enough to fit atop most utes, making it ideal for easy transportation and storage

The Quintrex Light Alloy Short trailer ensures easy and reliable transportation with its 749 ATM rating, 13-inch galvanized wheels and tires, adjustable keel rollers, and LED lights. This trailer also includes a motor support and a swing-up jockey wheel, making it convenient and practical for your boating needs

Equipped with a powerful Yamaha F20HP 4-stroke engine, this package offers a manual start and an alloy propeller for efficient performance. The included 24L Yamaha fuel tank with fuel lead and primer bulb ensures you have enough fuel for your journeys. Additional features like a carpeted fuel tank rack, Australian-made marine battery with isolation switch, bimini and envelope for shade, carpeted floor, rod holders, and transducer bracket make this boat package a comprehensive solution for any boating enthusiast

.PACK 3 INCLUSIONS:

- QUINTREX 370 EXPLORER - Painted in white

- QUINTREX LIGHT ALLOY SHORT 749ATM - 13 Inch Steel Galvanised Wheels, 13 Inch Tyres, 2 Alloy Cross Members, 39mm Axle (Round), 50mm Coupling Non Brake. 7 Pin Plug. Adjustable Keel Rollers, Adjustable Long Skids, Draw Bar, Forward Facing White Light, LED Lights, Motor Support, Swing Up Jockey Wheel, Winch 5:1

- YAMAHA F20HP 4-STROKE WITH TILLER HANDLE - Manual Start, Alloy Prop, Dealer Delivery & Training

- YAMAHA 24L FUEL TANK - Includes Yamaha fuel lead and primer bulb

Disclaimer

Our company offers the details of this vessel in good faith but cannot guarantee or warrant the accuracy of this information nor warrant the condition of the vessel. A buyer should instruct his agents and/or surveyors to investigate such details buyer desires validated. This vessel is offered subject to prior sale, price change or withdrawal without notice.

FUEL TANK RACK - Carpeted

-

MARINE BATTERY & ISOLATION SWITCH - Australian made marine rated battery with warranty

-

BIMINI AND ENVELOPE - Provides shade and shelter, can be folded together and safely covered/protected with the envelope

-

CARPETED FLOOR - Low clearance to maximize internal space

-

2X ROD HOLDERS

-

TRANSDUCER BRACKET - An external bracket for mounting the transducer, reducing the amount of holes/fixings in the actual hull

-

12-MONTHS QLD REGISTRATION FOR BOAT AND TRAILER

-

FULL IN-SHORE SAFETY GEAR - 70L Water, proof bag, 4x PFD(type 1) life jackets, LED torch, V-Sheet, Signal Mirror, 2x Telescopic Paddles, Anchor Kit with Rope & Chain

SPECIFICATIONS

Hull Length:3.7m

Beam:1.5

Max. HP:20hp

Number of People:3

Boat Weight:81kg

Motor Weight:90kg

Transom Shaft Length:LS

Top Sides:1.6mm

Bottom Sides:1.6mm

Transom Material:1.60mmFEATURES

Glove Box

Anchor Gusset

Flat Foredeck

Handle Bow

Handles Transom

Rowlock Blocks

Solid Corners

Seats: BenchOPTIONS

Covers: Bimini & Envelope

Carpet: Floor Low

Carpet: Fuel Tank Rack

Rod Holders (2)

Cleat

Transducer Bracket

Painted Hull

Painted Two Tone

Disclaimer

Our company offers the details of this vessel in good faith but cannot guarantee or warrant the accuracy of this information nor warrant the condition of the vessel. A buyer should instruct his agents and/or surveyors to investigate such details buyer desires validated. This vessel is offered subject to prior sale, price change or withdrawal without notice.

Rails: Bowrails

Rails: Side

Vinyl Wrap

Please note that some of the images may include options that are not included in this package. Please refer to the package listings. Additionally we do not stock all packages that are advertised on line, these packages are to give you an idea of price and inclusions. Please allow us the opportunity to quote you on your requirements.

We sell the full range of: Quintrex, Yellowfin Plate boats, Haines Hunter, Evolution Boats, Polycraft, Yamaha Outboards, MOVE boat trailers, and much more. We can assist with Finance & Insurance to approved applicants. Looking to trade-in or sell your boat? Speak with one of our boat valuation experts!

BRISBANE YAMAHA - (07) 3888 1727, Bruce Highway, Burpengary QLD

Boat Brand	Model	Stock Number
Quintrex	370 EXPLORER	Q370EP3-0724
Length	Year	Condition
3.70 Metres	2024	New
State	Suburb	Boat Link
Queensland	Burpengary East	

Disclaimer

Our company offers the details of this vessel in good faith but cannot guarantee or warrant the accuracy of this information nor warrant the condition of the vessel. A buyer should instruct his agents and/or surveyors to investigate such details buyer desires validated. This vessel is offered subject to prior sale, price change or withdrawal without notice.