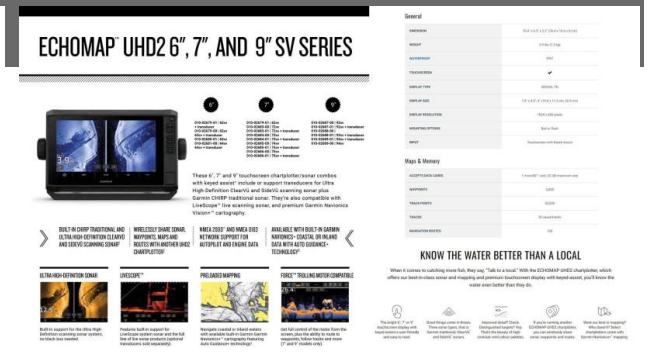




Quintrex 440 Renegade PRO SC(Side Console) + Yamaha F60hp 4-stroke - PRO Pack for sale online prices



Description

The Quintrex 440 Renegade Pro Side Console, a robust and versatile boat designed for avid anglers and adventure enthusiasts. This unpainted model combines durability and functionality, offering a solid platform with a fully welded top deck and gunnel upgrade, ensuring long-lasting performance and superior strength. The bow mount thruster plate facilitates easy mounting of an electric motor, perfect for precise maneuvering in tight spots. With an extra seat spigot, you can effortlessly reconfigure the seating arrangement to suit your fishing or leisure needs.

Paired with a Quintrex braked trailer, this package guarantees easy transport and hassle-free launches. The trailer features 13-inch alloy wheels, disc brakes, adjustable keel rollers, and a swing-up jockey wheel, ensuring your boat stays secure and stable during transit. For added convenience, the catch and release bracket allows for a smooth, single-person boat hookup at the ramp, making solo trips a breeze.

Powered by the reliable Yamaha F60HP 4-stroke engine, this boat offers exceptional performance and efficiency. The engine comes with forward control, electric start, power trim & tilt, and two multifunctional digital gauges, providing you with complete control and monitoring of your vessel. The Garmin UHD2 95SV chartplotter/sounder combo, along with the upgraded GT56UHD transducer, offers high-definition clear and side scanning sonars, ensuring you never miss a fish. Enjoy your favorite tunes with the Fusion RA60N sound system and two speakers, adding to the overall experience on the water. This package also includes a marine battery with an isolation switch, a motor support block, and a spare wheel and carrier, providing everything you need for a seamless boating adventure.

Images used are of the standard model, not the PRO model. For PRO model inclusions, see features list belowPRO PACK INCLUSIONS:

- QUINTREX 440 RENEGADE PRO SIDE CONSOLE - Unpainted

- QUINTREX BRAKED TRAILER 1100ATM - 13 Inch Alloy Wheels, 13 Inch Tyres, 4 Alloy Cross Members, 50mm Coupling Braked (2Tonne), 7 Pin Plug, Adjustable Keel Rollers, Adjustable Long Skids, Axle 45 Square, Clearance Lights, Disc Brakes, Draw Bar, Flippers (4), Forward Facing White Light, LED Lights, Motor Support, Rolled Frame Alloy I-Beam, Swing Up Jockey Wheel, Winch 5:1

- SPARE WHEEL AND CARRIER - Includes matching wheel and tyre

- CATCH AND RELEASE BRACKET - Easy drive-on single-person boat hookup at the boat ramp

- YAMAHA F60HP 4-STROKE - Forward Control with 703 Control Box, 2x Multifunctional Digital Gauges, Power Trim & Tilt, Electric Start, Alloy Prop, Fuel Filter, Workshop fitted & Tested, Bolted on with PVC backing board, Loom & Control Cables, Dealer Delivery & Training

Disclaimer

Our company offers the details of this vessel in good faith but cannot guarantee or warrant the accuracy of this information nor warrant the condition of the vessel. A buyer should instruct his agents and/or surveyors to investigate such details buyer desires validated. This vessel is offered subject to prior sale, price change or withdrawal without notice.

-

MOTOR SUPPORT BLOCK - Prevents the motor from returning to the vertical position and helps prevent excessive loads on the tilt assembly

-

GARMIN UHD2 95SV CHARTPLOTTER/SOUNDER COMBO - Garmin Navionics+ Australia & New Zealand Mapping preloaded, Bright sunlight-readable 9" keyed display, High-contrast vivid colour palettes, Traditional CHIRP and ClearVü scanning sonars, Garmin GT56 transducer fitted

-

TRANSDUCER UPGRADE TO GT56UHD - Ultra High-Definition ClearVü and SideVü scanning sonars, high wide CHIRP traditional sonar and more

-

FUSION RA60N SOUND SYSTEM + 2X SPEAKERS - Bonded LCD improves durability and protects against condensation, Built-in Class-D amplifier for efficiency and greater output, Compatible with your smart device via the Fusion Audio app, Quality marine grade sound system and speakers

-

MARINE BATTERY & ISOLATION SWITCH - Australian made marine rated battery with warranty

-

FULLY WELDED TOP DECK & GUNNEL UPGRADE

-

BOW MOUNT THRUSTER PLATE - For mounting an electric motor

-

EXTRA SEAT SPIGOT - Allows the configuration of the boat to be changed to suit different situations

-

ROD STORAGE POCKET

-

12-MONTHS QLD REGISTRATION FOR BOAT AND TRAILER

-

FULL IN-SHORE SAFETY GEAR(4.8m+) - 70L Water, proof bag, 4x PFD(type 1) life jackets, LED torch, V-Sheet, Signal Mirror, 2x Telescopic Paddles, Anchor Kit with Rope & Chain, Inshore Flares(2x red, 2x orange), 1kg Fire Extinguisher

SPECIFICATIONS

Hull Length:4.68m

Beam:2.12

Max. HP:60hp

Number of People:5

Fuel Tank:50 L

Boat Weight:409kg

Motor Weight:130kg

Transom Shaft Length:LS

Top Sides:3mm

Bottom Sides:3mm

Transom Material:3.00mm

Covers: Bimini & Envelope

Casting Platform

Helm: Side Console & Hydraulic Steering

Anchorwell

Battery Box

Bow Roller

Cigarette Lighter Outlet

Drink Holder Cups

Disclaimer

Our company offers the details of this vessel in good faith but cannot guarantee or warrant the accuracy of this information nor warrant the condition of the vessel. A buyer should instruct his agents and/or surveyors to investigate such details buyer desires validated. This vessel is offered subject to prior sale, price change or withdrawal without notice.

Quintrex Ice Box 22 L

Rod Holders (4)

Transom Step & Rail

Alloy Cleat on Front Deck

Blade Hull

Centre Console Deck

Rear Casting Platform & LBT

Side Decks Extruded

Side Pockets

Smooth Topsides

Transducer Brackets x 2

Side Rails

Seatread Kit

Quintrex Seat Covers

Seat Positions (3)

Seats: Pedestal

Helm: Hydraulic Steering

Special Edition StripeOPTIONS

Covers: Bimini & Envelope

Fusion Stereo & Speakers

Marine Radio

Seat Spiggot in Casting Platform

Rod Storage

Welded Gunnels and Top Decks

Painted Hull

Unpainted Gunnel & Top Deck

Painted Two Tone

Rails

Rails: Side

Quintrex Seat Covers

Seat Pedestal

Seats: Bass Sport

Vinyl Wrap

Please note that some of the images may include options that are not included in this package. Please refer to the package listings. Additionally we do not stock all packages that are advertised on line, these packages are to give you an idea of price and inclusions. Please allow us the opportunity to quote you on your requirements.

We sell the full range of: Quintrex, Yellowfin Plate boats, Haines Hunter, Evolution Boats, Polycraft, Yamaha Outboards, MOVE boat trailers, and much more. We can assist with Finance & Insurance to approved applicants. Looking to trade-in or sell your boat? Speak with one of our boat valuation experts!

BRISBANE YAMAHA - (07) 3888 1727, Bruce Highway, Burpengary QLD

Disclaimer

Our company offers the details of this vessel in good faith but cannot guarantee or warrant the accuracy of this information nor warrant the condition of the vessel. A buyer should instruct his agents and/or surveyors to investigate such details buyer desires validated. This vessel is offered subject to prior sale, price change or withdrawal without notice.

Boat Brand	Model	Stock Number
Quintrex	440 RENEGADE SC	Q440RSCPPRO-0724
Length	Year	Condition
4.68 Metres	2024	New
State	Suburb	Boat Link
Queensland	BURPENGARY	

Disclaimer

Our company offers the details of this vessel in good faith but cannot guarantee or warrant the accuracy of this information nor warrant the condition of the vessel. A buyer should instruct his agents and/or surveyors to investigate such details buyer desires validated. This vessel is offered subject to prior sale, price change or withdrawal without notice.