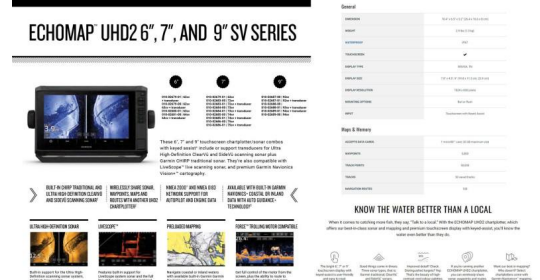




\$73,990



Our company offers the details of this vessel in good faith but cannot guarantee or warrant the accuracy of this information nor warrant the condition of the vessel. A buyer should instruct his agents and/or surveyors to investigate such details buyer desires validated. This vessel is offered subject to prior sale, price change or withdrawal without notice.

Compatible with your smart device via the Fusion Audio app, Quality marine grade sound system and speakers

-

GME GX750B VHF MARINE RADIO - Compact modular design, Large LCD with brightness & colour options, IPX7 ingress protection, Waterproof speaker microphone, 25/1 Watt Switchable Power, Dual & Triple Watch with Programmable Priority Channel, Two Working Channel Memories

-

MARINE BATTERY & ISOLATION SWITCH - Australian made marine rated battery with warranty

-

BIMINI AND ENVELOPE WITH FRONT & SIDE CLEARS - Provides shade and shelter, can be folded together and safely covered/protected with the envelope. The front & side clears provide decent protection from the elements without compromising on vision or adding to the overall weight of the boat.

-

DRIVER & PASSENGER SEAT UPGRADE

-

DELUXE FOLDING REAR LOUNGE AND BACKREST

-

CARGO/LUGGAGE NETTING FITTED UNDER COCKPIT

-

COCKPIT LIGHTS UPGRADE

-

WINDSCREEN GRAB RAIL UPGRADE

-

TRANSOM DOOR ADDED

-

TRANSOM PADS ADDED - Rubber pads to provide comfort and added grip

-

ROD HOLDERS

-

12-MONTHS QLD REGISTRATION FOR BOAT AND TRAILER

-

FULL IN-SHORE SAFETY GEAR(4.8m+) - 70L Water, proof bag, 4x PFD(type 1) life jackets, LED torch, V-Sheet, Signal Mirror, 2x Telescopic Paddles, Anchor Kit with Rope & Chain, Inshore Flares(2x red, 2x orange), 1kg Fire Extinguisher

SPECIFICATIONS

Hull Length:5.67m

Beam:2.3

Max. HP:140hp

Number of People:5

Fuel Tank:Under Floor 95L

Boat Weight:619kg

Motor Weight:220kg

Transom Shaft Length:LS

Top Sides:3mm

Bottom Sides:4mm

Transom Material:4mmFEATURES

Glove Box

Pole Mount Insert

Rear Ladder

Rod Holders (2)

Scuppers

Underfloor Storage

Anchorwell

Cleat On Front Deck

Fully Weld Gunnels & Side Decks

Lean Through Dash

Side Decks Extruded

Side Pockets

Transducer Brackets x 2

Painted Hull

Rails

Windscreen

Seat Slider

Seats: Angler Sport

Seats: Rear Lounge and Backrest

Hydraulic SteeringOPTIONS

Covers: Bimini & Envelope

Covers: Bimini & Envelope NT

Covers: Storm Cover

Front Clears

Side Clears

Burley Bucket

Cargo/Luggage Netting

Cockpit Lights (2)

Cutting Board for Ski Pole

Drum Winch

Live Bait Tank Back Deck

Marine Radio

Ski Hooks

Ski Pole

Sound System & Speakers

Transom Pads

Twin Battery Box & Switch

Quintrex Fishabout Captain's Bundle

Quintrex Fishabout Comfort Bundle

Quintrex Fishabout Fishing Bundle

Painted Two Tone

Windscreen Grab Handle

Deluxe Folding Rear Lounge & Backrest

Seats: Fish Sport

Seats: Maritime Sport

Upholstered Side Pockets

Helm: Hydraulic Tilt Steering

Transom Door

Vinyl Wrap

Please note that some of the images may include options that are not included in this package. Please refer to the package listings. Additionally we do not stock all packages that are advertised on line, these packages are to give you an idea of price and inclusions. Please allow us the opportunity to quote you on your requirements.

We sell the full range of: Quintrex, Yellowfin Plate boats, Haines Hunter, Evolution Boats, Polycraft, Yamaha Outboards, MOVE boat trailers, and much more. We can assist with Finance & Insurance to approved applicants. Looking to trade-in or sell your boat? Speak with one of our boat valuation experts!

BRISBANE YAMAHA - (07) 3888 1727, Bruce Highway, Burpengary QLD

Boat Brand	Model	Stock Number
Quintrex	540 Fishabout	Q540FAP3-0324
Length	Year	Condition
5.67 Metres	2024	New
State	Suburb	Boat Link
Queensland	Burpengary East	